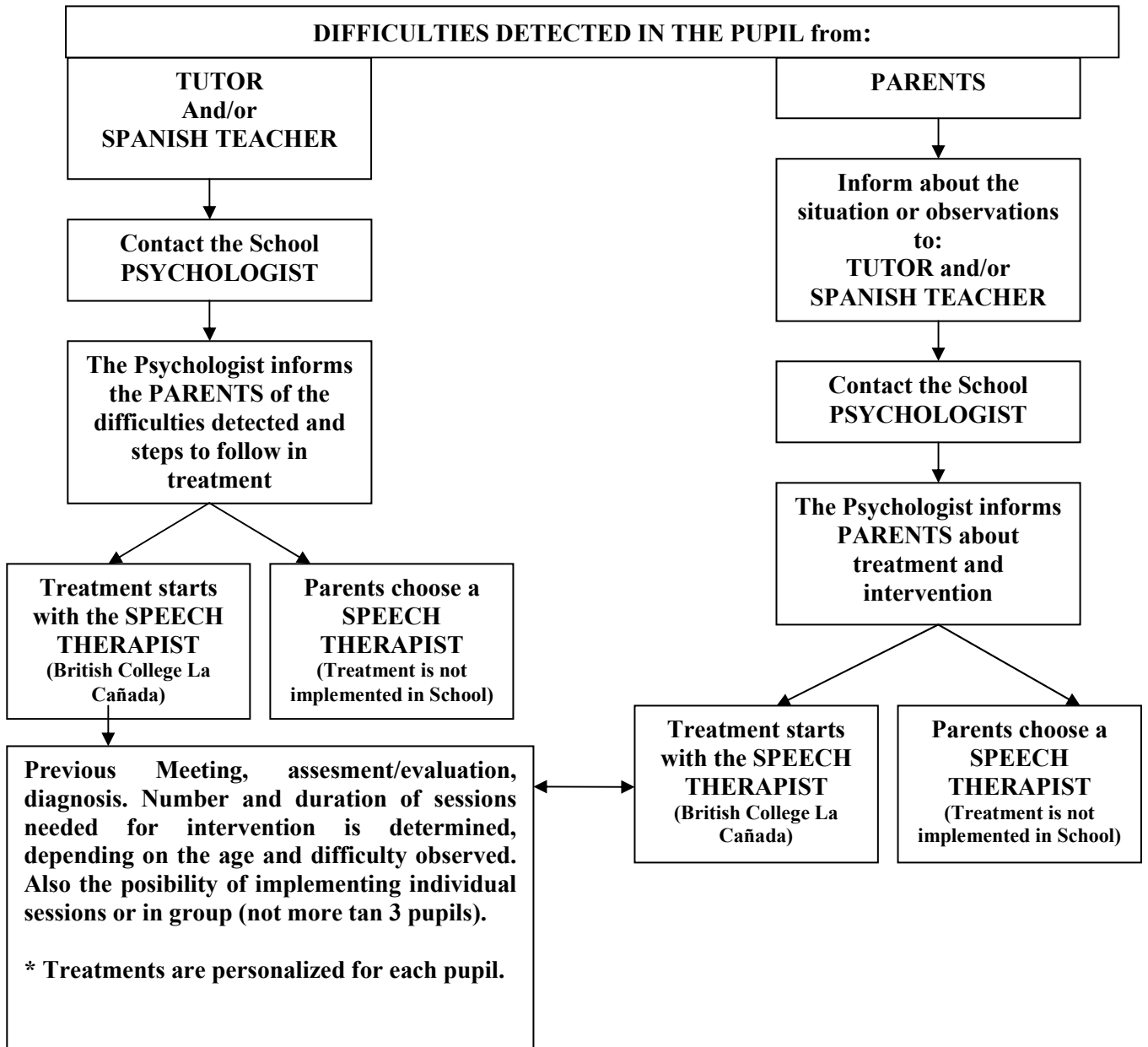


**PROTOCOL FOR SPEECH THERAPY SERVICE**



**SPEECH THERAPY SESSIONS AT BRITISH COLLEGE LA CAÑADA:**

1 Session (30 minutes)*	1 Session (1 hour)*
-------------------------	---------------------

\* The sessions in Speech Therapy Intervention are 30 minutes to 1 hour long, depending on the pupil's age and the difficulty detected.